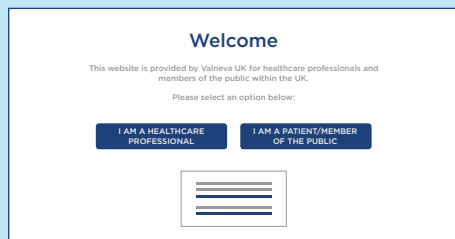


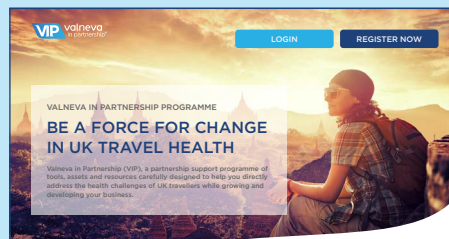
REGISTERING WITH VALNEVA IN PARTNERSHIP (VIP).

1



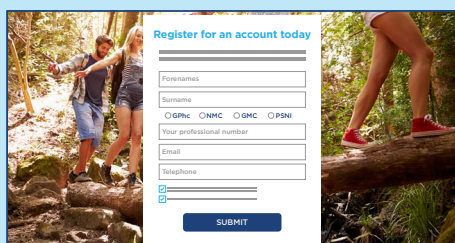
Go to the VIP dashboard via vip.valneva.com and click on I am a Healthcare Professional. On the next screen click Yes.

2



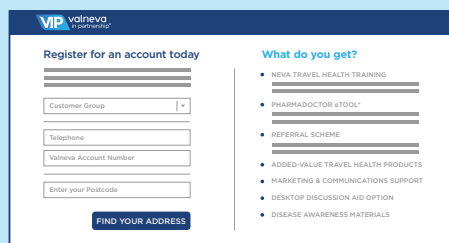
Click on either of the two blue Register Now buttons. The page will automatically scroll down to the registration form.

3



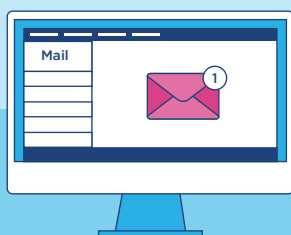
The page will automatically scroll down to a registration form. Enter your name as it is written in the GpHC register. It is vital that your name and professional number is exactly the same as it appears on the register, otherwise your details cannot be validated (you can check your details here: <https://www.pharmacyregulation.org/register>). Click Submit.

4



Select your customer group from the drop-down list, and the pharmacy / clinic name. Please ensure that the information is entered accurately. If you already have an account with Valneva for placing orders, add your account number in the Valneva Account Number box, otherwise leave it blank. Click Find Your Address.

5



You will receive an email that confirms your registration. The email will confirm your username and prompt you to set a password. Click on the link and create your password.



If you are registering and you are part of a chain, your details will be passed to Valneva for approval with your Head Office. Independents or multiples that have signed up for PharmaDoctor or neva before VIP will automatically be validated and be able to open an account straight away. Please note you must enrol separately to neva training and PharmaDoctor.